

IN THIS ISSUE



*New Ultracalss SDB
for CAT796AC trucks*

• 2 •



More SDBs for South32

• 3 •



*New premises for
Duratray WA*

• 6 •



Duratray SDBs for Canada

New Duratray Suspended Dump Bodies were supplied to one of the largest diamond mines in Canada.

During this year's winter-road season in Canada, two new Duratray Suspended Dump Bodies (SDB) were supplied to one of the largest diamond mines in north-western Canada. This continues an annual cycle of dispatches via the frozen winter Ice Road, which dates from the year 2001, and has now involved the cumulative delivery of 65 units of Duratray SDBs to three major open pit diamond mines around the Yellowknife area.



The dispatch via the frozen winter Ice Road dates from 2001.



The oldest diamond mine has been an ongoing Duratray client since 2001, with fleet purchases of thirty five units. The new 220-tonne capacity dump bodies were assembled and delivered by Duratray's local agent SMS Equipment in Edmonton.

Under extremely hard and abrasive rock conditions, combined with severe weather to temperatures below -40°C, the Duratray Suspended Dump Bodies have outperformed regular steel dump bodies which were considered uneconomic to repair after a service life of only 1-2 years.

New Ultraclass SDB model for CAT796AC trucks

Working in conjunction with Caterpillar engineers in Australia and the USA, Duratray International team designed and built one of the largest dump bodies ever produced in Australia.

With an SAE volumetric capacity of 298 cubic metres, the new Ultraclass dump body design was completed in-house. It uses the combo concept whereby the units are designed for transporting both coal (a low-density material), and overburden/ waste (a material with a higher loose density).

The Duratray Ultraclass has been designed for transporting low and high density material.

In-house engineering design was performed using 3D Solidworks and FEA. Subsequently, the new dump body design was subject to external technical review by mechanical engineering and maintainability specialists for structural and fatigue performance. Separately, DEM Discrete Element Modelling of loading and discharge flow characteristics was undertaken by the US-based world's leading bulk materials engineering firm.

Like all Duratray Suspended Dump Bodies, this new Ultraclass model is uniquely customised to customer contract specifications for the mine site where it will be working. Corollary dump body designs for Caterpillar 796AC trucks have been produced for other potential clients in WA, NSW and Peru.



SDBs Ultraclass in North Queensland.



The Ultraclass has a SAE volumetric capacity of 298 cubic metres.



The Ultraclass model is customised to client specifications.

SOUTH32 INCREASES SDB FLEET

One of South32's largest mines in Australia has increased by 15% its fleet of Duratray Suspended Dump Bodies this year, taking the fleet size to 33 units.

This important manganese mine, located in the Northern Territory, has had SDBs in operation for over three decades.

The SDB's unique features, specially its rubber wear mat, are the perfect fit for this mine site because of their remote location and the material hauled properties, a combination of hard and abrasive ore and sticky waste. Innovation engineering improvements have been undertaken on the Duratray SDBs to offer up to 65% less wear in most mining conditions including heavy or abrasive rock and sticky materials.



Duratray WA Regional Manager Pablo Rossi said that "the first trucks of the current fleet were commissioned 13 years ago and are due for replacement soon so we are looking forward to work with this valued customer, as they install the new planned fleet over the next two to three years".

South32 is a globally diversified mining company and the 25th largest mining company in the world with presence in four continents.

SDB training in Indonesia



Since establishing a manufacturing supply agreement with supplier (NOV Profab) in Indonesia, Duratray International Field Service personnel made a number of visits to perform a final quality inspection and hand over on a number of international Suspended Dump Bodies (SDB) that NOV Profab has fabricated and to offer comprehensive training on the installation of the SDB suspended rubber wearmat kits.

With the increased demand for local support for the SDB product from customers on all continents, Duratray is now able to assist with local expertise to cater for their ongoing product support needs.

The main reason Duratray has chosen NOV Profab as a suitable supplier is their reputation for high-quality manufacturing, competitive cost and

more importantly, their high priority for working safely.

NOV Profab facility is located at Batam Island, Indonesia, which forms part of a Free Trade Zone and this allows Duratray to be able to free-issue the rubber wearmat kits from its manufacturing facilities in Melbourne without having to pay import duties and/ or taxes when re-exported to our customers destination port.

The location of the Batam factory is 20km South of Singapore which, as a major shipping hub for the region, allows Duratray to have ready access to numerous vessels which are transiting through Singapore and sailing onwards to ports all around the world. Duratray SDB deliveries ex-Batam during this year 2020 have included destinations in Australia, PNG, the Philippines and the UK.

MANAGING DIRECTOR PRESENTED IN VIP ROUNDTABLE FOR TIQ



During a large Roundtable event hosted by Trade and Investment Queensland in Brisbane, the Managing Director of Duratray International, Marcelo Medel presented information regarding the company's expanding activities in Russia and adjacent countries over the past five years.

The VIP Roundtable was hosted by TIQ in honour of the Ambassador of the Russian Federation to Australia, Dr Alexey Pavlovsky and his team from Canberra.

During recent years Duratray has built-up an enviable list of new clients in Russia, Kazakhstan, Kyrgyzstan and Mongolia. This has been based on local manufacture of steel components of dump bodies in Russia using carefully evaluated local steels, combined with new high-efficiency dump body designs which have provided 5%-15% productivity improvements compared to traditional designs.



Longest serving employee retiring

Field Supervisor Don Wright retires after 40 years with Duratray International.

The Duratray International family bids a reluctant farewell to Field Service Supervisor Donald Frederick Wright (66), who is retiring at the end of October. Mr. Wright steps away as the longest-serving employee in Duratray International history, with nearly 40 years of experience with various Duratray divisions and products.

Mr. Wright began his storied career in the company in 1982 when Dunlop Industrial offered him the position of Field Service Leading Hand. In 1985, he was promoted to Field Service Supervisor.

In 1989, Pacific Dunlop introduced the Suspended Dump Body to the local mining industry and Dunlop Industrial Field Service personnel were responsible for the installation of its rubber components. It was during this period that Pacific Dunlop changed its name to Duratray International. Approximately 10 years later the company was acquired by Chilean heavy machinery manufacturer Conymet.

Mr Wright's most memorable and at the same time most challenging time working with Duratray was the installation of rubber kits into six CAT 789 trucks at Kumtor mine site in Kyrgyzstan. The job took place in the open with only a tarpaulin with a small diesel heater to ward

off the elements. There were -30 degrees Celsius, snow, and they worked at an altitude of 4,300 metres with 30 per cent less oxygen. This, plus the language barrier, made the whole experience an unforgettable moment.



Clearly, traveling for work was not always that hard - one of the places Mr. Wright enjoyed the most during his travels was Canada. "Great scenery and people are easy to get along with," he said.

About to retire, Don, as most people call him, states as his biggest accomplishment during his time in the company, assisting in the improvement of Duratray products.

Mr Wright says that what he will miss the most of his time at Duratray is working alongside Field Service Supervisor Kevin Bolton for the last 30

plus years, whom he's become close friend with.

The Duratray family is deeply saddened to see Mr. Wright go, but grateful to have spent all these years with him and pleased that he will finally get a hard-earned break. His plan for retirement is to caravan with his wife Michelle in different states over the next few years for seven months at a time during Perth's winter months and volunteer as a Fire Fighter during Perth's summer months.

Mr. Wright has been married to Michelle for 30 years and has three sons and nine grandchildren, aged from 3 to 23 years old.

Assisting in the improvement of the dump bodies is Don's biggest achievement during his time in Duratray.

He enjoys Asian food and, as a true Oz, he loves a good stake. He's a sport lover - his favourite football teams are Falcons (WAFL) and Carlton (AFL) and his favourite Cricket teams are Queensland and Australia.

Thank you, Donald. The knowledge that you shared and the learning you brought cannot be compared.

Lihir Mine adds five Duratray SDBs to fleet

The Lihir gold mine in Papua New Guinea is expanding its ore haul truck fleet to 39, bringing with it an order for international manufacturer Duratray International for five of the company's Suspended Dump Bodies (SDB).

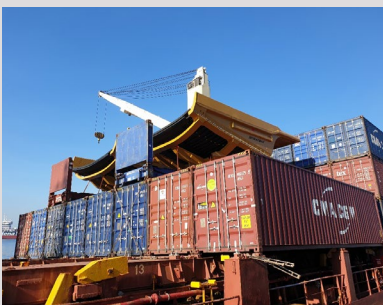
Lihir has been a Duratray client since 1995.

The first Duratray dump body was delivered to Lihir during the mine development activities by the Roche-Thiess Joint Venture in 1995 (pictured).

The bodies display impact-resistant and shock absorption qualities plus the abrasion-resistant properties of rubber wear and a combination of specialised steels.



The company has supplied Suspended Dump Bodies for CAT 785B haul trucks since 1996.



Duratray International has since launched its Lightweight XP dump body made with high-technology steels allowing weight reductions of up to 40 per cent and transportation costs per tonne by 25 per cent.



Covid-19 campaign

Duratray Looks After Duratray is a social campaign in Chile designed to alleviate the pandemic's effects.

As COVID-19 sweeps across the world, corporate social initiatives can provide comfort and safety not only to staff, but also to their families.

To assure the mental wellness and safety of our employees and their families, Duratray International Chile has implemented the #DuratrayLooksAfterDuratray campaign, which encompasses three main activities:

gender, pre-existing condition),

2) ongoing monitoring of all families and their potential symptoms for early response and being able to offer support, and

3) delivery to all families of a protection kit, containing supplies that are out of stock or not easily available in the market due to the current crisis, such as masks, gloves alcohol gel and chlorine.



The campaign took place in the city of Antofagasta which has been badly hit by the coronavirus pandemic.

The corporate sector, specially mining suppliers, can move the needle during this crisis by supporting their employees and their families, which benefits society and, in the process, the economy at large.

1) Georeferenced family mapping; taking into account each employee's family structure and their geographical location to assess risk levels by zone and region. It focuses on the unique vulnerability level of each family member (age,



Deliveries to Europe continue

For a long-standing Duratray client in the United Kingdom, four new Suspended Dump Bodies (SDB's) were delivered for Caterpillar 777G 100-tonne capacity haul trucks.

Designed to work in highly abrasive rock, while significantly reducing loading noise, the new SDBs were built as replacements for a previous SDB fleet at the same quarry which were initially delivered in 1988.



The photograph shows the first two units being delivered from the port.

New Premises for Duratray WA

We are proud to announce that due to our growth in Western Australia, Duratray International moved to a new location earlier this year.

This larger and more modern facility located in President Street, Welshpool, Western Australia, allows us to better cater for our customers in WA and provides our staff with a state-of-the-art workspace.

"We are excited about this relocation" comments our WA Regional Manager, Pablo Rossi. "This move represents another significant milestone for our growing company. The new office space better accommodates our growing team and enables us to hire additional talent in the future to provide first-class support and equipment to our local clients. The additional space will also help drive innovation and provide the opportunity to further expansion into additional markets and product lines".



As a valued customer, vendor and business partner, we thank you for taking the time to update your records.

Duratray International Western Australia
Unit 1/93 President Street
Welshpool, WA 6106
Australia

Trades Shows 2021

We are delighted to announce that Duratray International will be exhibiting in the following mining events in 2021



Mining World Russia (MWR) - Moscow, April 20-22

Duratray has been exhibiting in Mining World Russia since 2017, MWR has provided Duratray the opportunity to feature its customised heavy-engineering technology, showcasing the Suspended Dump Body (SDB) and the XP Steel Light Dump Body to the Eastern European mining market.



Austmine 2021 - Perth, May 25-27

The Austmine conference is the go-to event for mining leaders to connect around tech strategic priorities, emerging opportunities and cutting-edge technologies that are driving change for a sustainable future.



MineExpo 2021 - Las Vegas, September 13-15

Sponsored by the National Mining Association of the United States, this show exhibits the latest mining processing technologies, and state-of-the-art machinery & equipment for the coal, metal and nonmetal mining industries.



IMARC 2021 - Melbourne, October 25-27

IMARC has proven itself in the past and continues to be ahead of the curve in leading the discussions around the challenges and opportunities that the mining industry is facing, as it continues to change more rapidly and more significantly.

End of the Year Greetings

Managing Director Marcelo Medel reflects on this year's developments.

Covid-19 Update

During this time of unprecedented uncertainty, our hearts are with anyone who has been impacted by the pandemic, either directly or indirectly. The wellbeing of our families, colleagues, customers, partners and the many friends of Duratray is our main concern.

The company has continued with the implementation of a number of actions, including but not limited to:

- Cancellation or postponement of physical events and meetings and evaluating which events will be attended as a virtual experience
- Extending our mandate to conduct only business-critical travel, which, as always, is subject to local regulatory guidance and restrictions.
- Following all health & safety protocols in our offices and factories across all branches.

At Duratray we understand the enormous contribution that mining makes to the prosperity not only of Australia but also of many countries around the world and are fully committed to keep business continuity.

As the situation evolves and we navigate our way through the pandemic, Duratray will reach out if there are further modifications. In the meantime, please feel free to get in touch at info@duratray.com.

Keep safe!

Without a doubt, 2020 has been a challenging year. In front of our eyes, we have seen the world change in ways we never predicted. This year made us realise our fragility and vulnerability but, at the same time, of our strength and the power of unity.

We're still in the process of overcoming one of the worst pandemics of the last century. We're not there yet - some countries we thought were on the safe side, have been hit with a second or even third wave. It is definitely going to be a long journey, where we've had to learn new ways to live our lives.

As an international company, Duratray has seen different sides of the coin on how COVID-19 has disrupted the lives of so many. We have three principal offices in Australia, Melbourne being our headquarters. For approximately fifteen weeks, we all had to seclude in our homes to work remotely. It wasn't always easy, but our staff made sure our valued customers received a great service.

On the other hand, Brisbane and Perth kept going strong. Fortunately, the coronavirus pandemic didn't hit Queensland and Western Australia as hard as Victoria and, although slower, things kept moving.

Despite this year's challenges, we've kept supporting our customers, employees and the community at the best of our capacity. We've been able to keep all our employees in their jobs and deliver our equipment to our customers worldwide in a timely manner.

Duratray is blessed to have a great team of passionate people, reliable suppliers and to be located in Australia, a country that has responded in the best possible way to the COVID-19 outbreak.

Unfortunately, it's been a different story for Duratray Latin America. Chile went on compulsory quarantine for several months after cases reached 1,000 plus per day in May, becoming the sixth country with more cases for every million inhabitants.

“Despite this year's challenges, we've kept supporting our customers, employees and the community at the best of our capacity.”

However, the year is coming to an end now. With only weeks left to leave 2020 behind, we're proud to say Duratray International and its people have successfully worked to avoid disruptions caused by the virus, while at the same time acting responsibly to do everything to keep our people safe. We are continuing to monitor and assess the evolving situation closely and will be diligent about communicating on important issues.

I want to thank each and every member of our team for their commitment to keeping the business going, to our loyal customers for trusting in our capacity and the uniqueness of our equipment, and to our suppliers for always responding on time.

I wish you prosperity and a very successful 2021; and above all good health to you and your families

Marcelo Medel
Managing Director
Duratray International