

Duratray Australia

8 Dunlop Court
Bayswater Victoria 3153

Australia

T +61 3 8761 2800

F +61 3 8761 2899

Duratray Latin America

Ongolmo 350
Antofagasta

Chile

T +56 55 598 989

F +56 55 598 988

Duratray North America

4600 S Syracuse Street
Suite 900
Denver CO 80237

USA

T +1 303 256 6642

F +1 303 256 6205

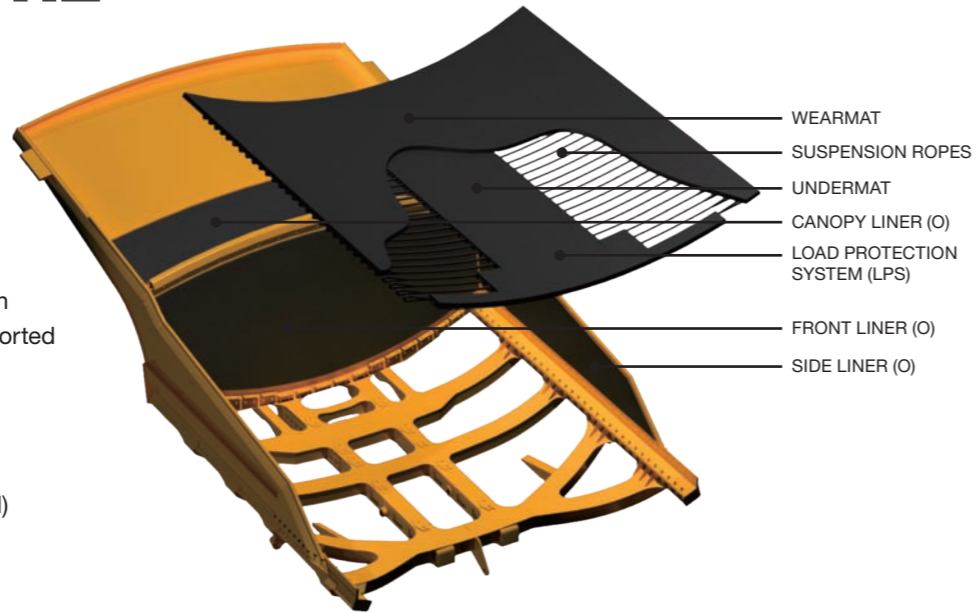
DURATRAY SUSPENDED DUMP BODY (SDB)

DELIVERS AND INCREASES PRODUCTION

REDUCES MAINTENANCE

PROVIDES OPERATIONAL SAFETY

DURATRAY SDB: A UNIQUE CONCEPT DESIGNED TO CARRY MORE



The Duratray SDB unique concept relies on the flexibility of a rubber floor which is supported above a steel frame by elastomeric ropes.

The components, such as rubber mats, side liners and steel re-enforcements can be managed and configured (or customised) according to the mine requirements.

SDB OPERATIONAL ADVANTAGES

THE BEST LIFECYCLE COST FOR THE MINING INDUSTRY

SUPERIOR PAYLOAD

LOW MAINTENANCE

REDUCES CARRY BACK

HIGHER OPERATIONAL AVAILABILITY

RESISTANCE TO EXTREME ABRASION

HIGHER VOLUMETRIC CAPACITIES

REDUCES NOISE LEVELS

LIGHTER IN WEIGHT

LOWER SHOCK AND VIBRATION TO THE TRUCK & ITS OPERATOR

DURATRAY SDBs WORLDWIDE



CAT 797B - BHPB Escondida (Chile)



KOM 930E - Anglo Platinum (South Africa)



CAT 793 - Downer Goonyella Coal Mine (Australia)



CAT 785 - Newcrest Lihir Gold Mine (PNG)



CAT 789 - Barrick Gold Cowal (Australia)



CAT 777F - Moolmans Contractors (South Africa)



CAT 793 - BHP Ekati Diamond Mine (Canada)



KOM 930E - Anglo American Los Bronces (Chile)



CAT 785 - BMA Norwich Park (Australia)



CAT 789 - Assmang Khumani (South Africa)



CAT 777F - Iamgold Rosebel (Suriname)



MT4400 - Taseko Gibraltar Mine (Canada)



KOM 830 - Rio Tinto Diavik Diamond Mine (Canada)



KOM 960E - Anglo-Xstrata JV Collahuasi (Chile)



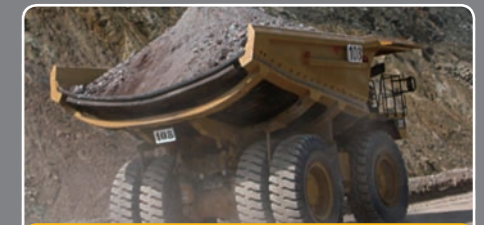
CAT 777D - Olizki Rotem (Israel)



Mercedes Benz Actros 4144 - Transearch Co (Chile)



CAT 793 - Barrick Veladero (Argentina)



CAT 777D - PanAust Phu Kham (Laos)